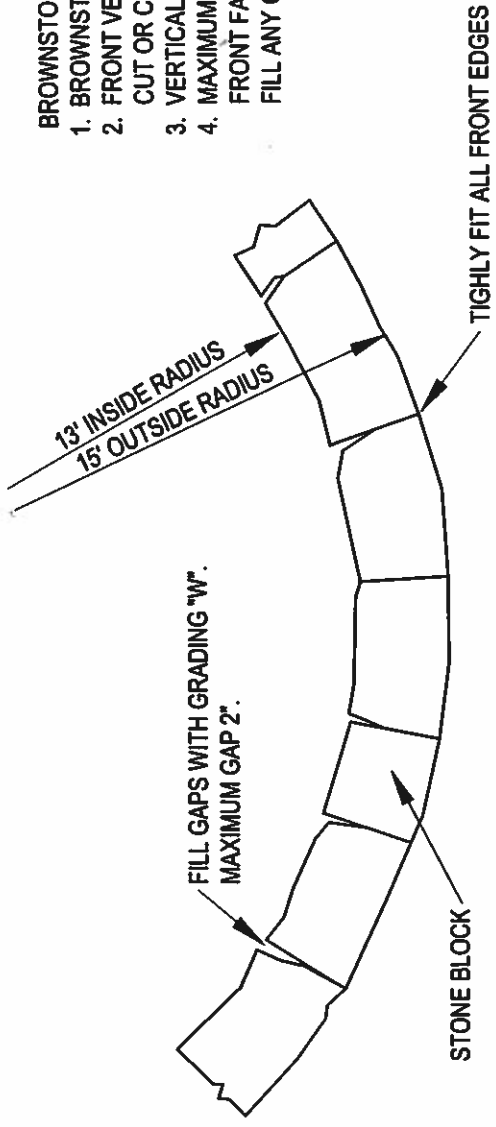


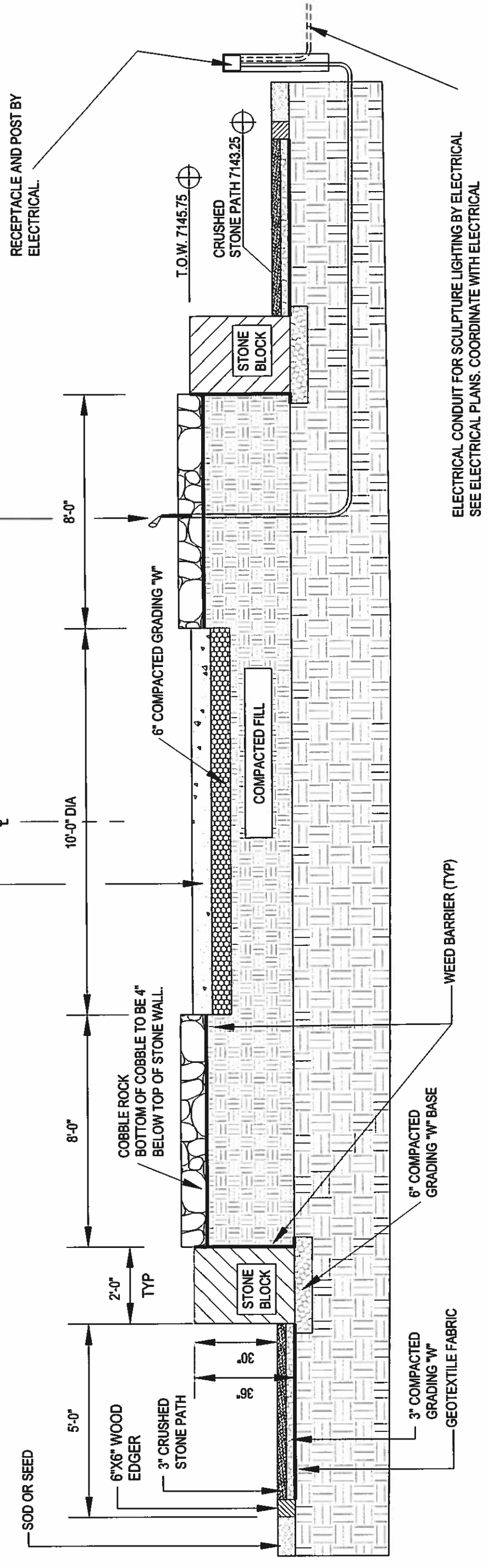
- BROWNSTONE BLOCK WALL NOTES:**
1. BROWNSTONE BLOCK SIZES: LENGTH: MINIMUM OF 24", MAXIMUM OF 36", HEIGHT: 36", DEPTH: 24"
  2. FRONT VERTICAL EDGES BETWEEN BLOCKS SHALL FIT TIGHTLY TOGETHER.  
CUT OR CLEANLY BREAK EDGES AS REQUIRED TO PROVIDE TIGHT FIT.
  3. VERTICAL DIFFERENCE FROM TOP OF WALL ELEVATION SHOWN SHALL NOT EXCEED 1".
  4. MAXIMUM GAP BETWEEN ADJACENT BLOCKS ON TOP SURFACE SHALL BE 1/2" WITHIN 6" OF FRONT FACE AND NOT MORE THAN 2" ON BACK 18" OF BLOCK.  
FILL ANY GAPS BETWEEN BLOCKS WITH GRADING "W".



**PARTIAL BROWNSTONE WALL PLAN TYP**  
SCALE: 1/4" = 1'-0"

6" THICK 4,500 PSI CONCRETE SCULPTURE BASE WITH FIBAR. CENTER WITHIN WALLS.

10'-0" DIA

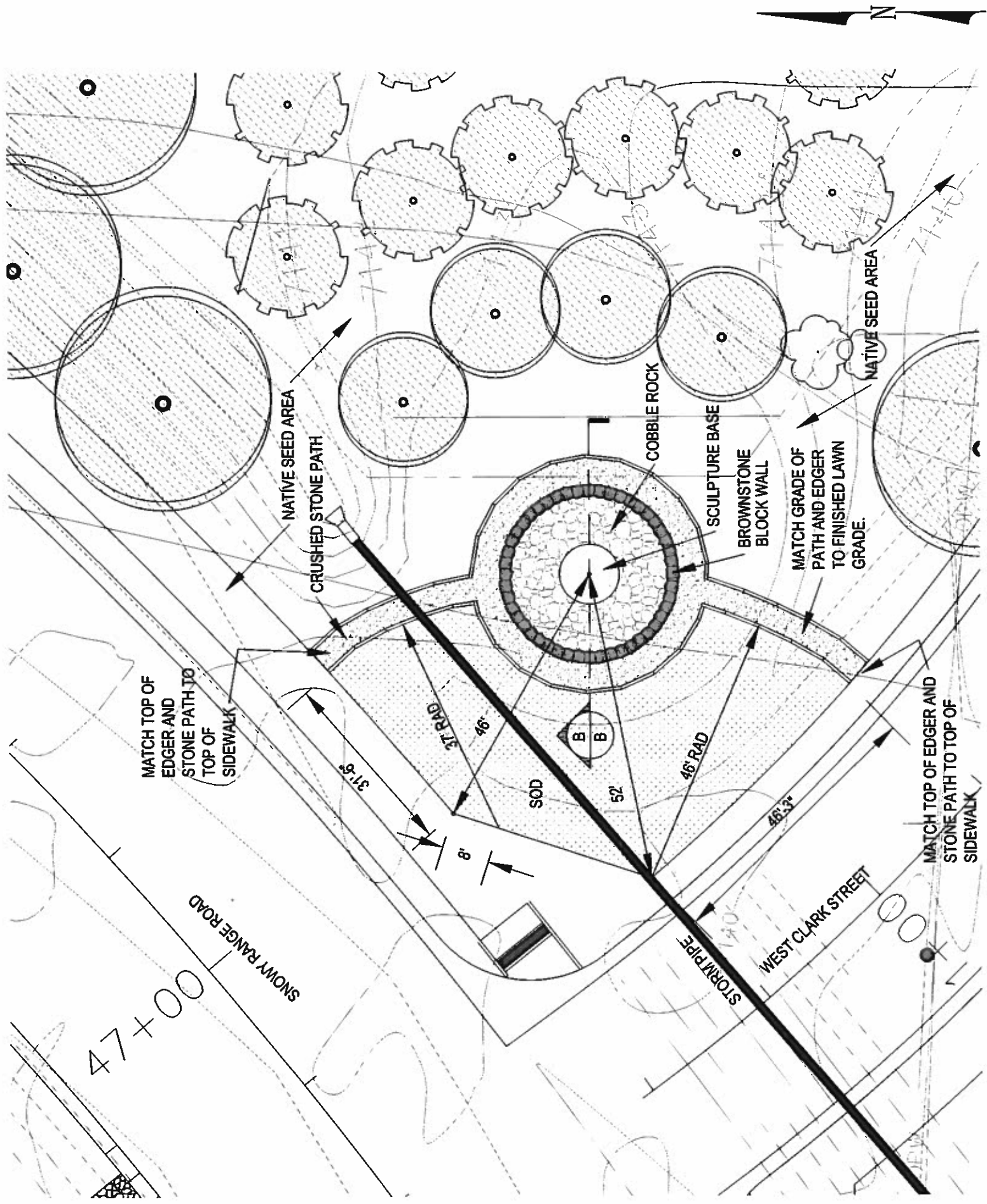


ELECTRICAL CONDUIT FOR SCULPTURE LIGHTING BY ELECTRICAL  
SEE ELECTRICAL PLANS. COORDINATE WITH ELECTRICAL

**SECTION B-B** SCALE: 3/8" = 1'-0"

NOTES:

1. WOOD EDGER TO BE #2 CA-C PRESSURE TREATED CS PINE OR APPROVED EQUAL.
2. 6" X 6" WOOD EDGER TO BE STAKED INTO GROUND WITH 3 - 18" LONG #4 REBAR. PLACE ONE STAKE 1 FOOT FROM EACH END AND IN MIDDLE OF TIMBER.
3. MITER ENDS OF WOOD TIMBERS AS NECESSARY TO FORM A TIGHT FIT BASED ON RADIUS SHOWN AND AS REQUIRED TO MAINTAIN NOTED WIDTH OF PATH.
4. SECURELY FASTEN ENDS TO TIMBERS TOGETHER WITH GALVANIZED NAILS.
5. MINIMUM LENGTH OF 6" X 6" TIMBERS SHALL BE 3'-0". USE LENGTHS AS APPROPRIATE TO FORM RADIUS REQUIRED.
6. CRUSHED STONE PATH TO BE 3" OF APPROVED BREEZE MULCH OVER 3" OF COMPACTED GRADING "W".



ENLARGED CLARK ST LANDSCAPE LAYOUT PLAN

SCALE: 1" = 20'-0"